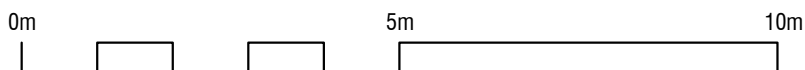
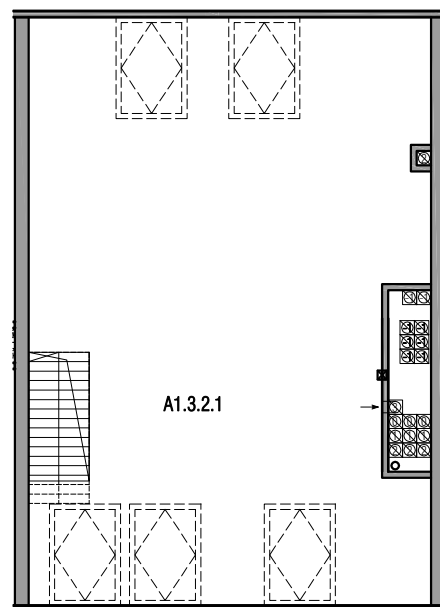
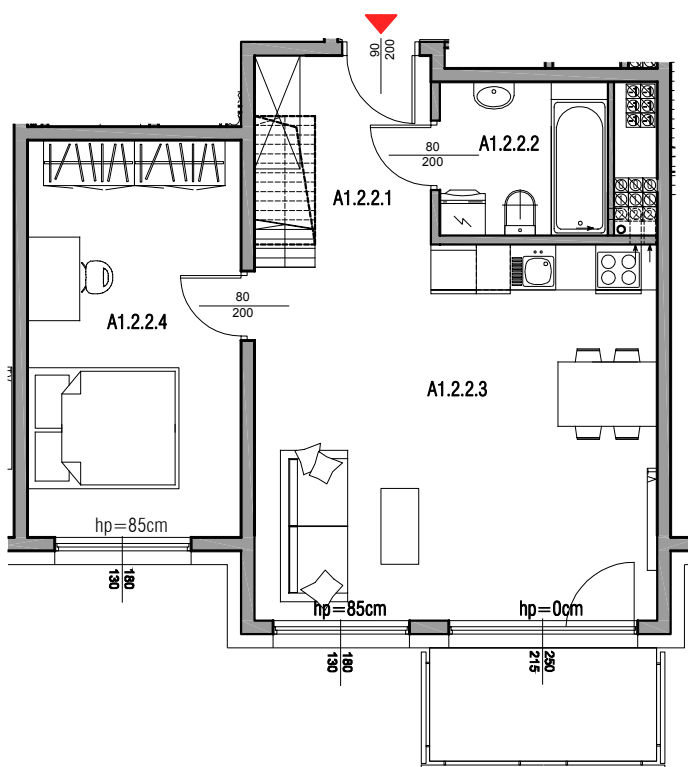
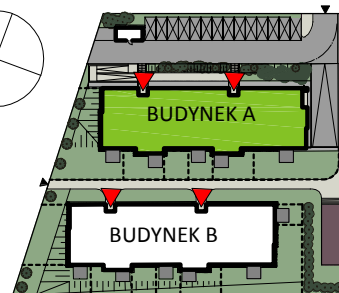
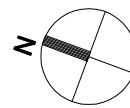


BUDYNEK A

II PIĘTRO

MIESZKANIE A1.2.2



A1.2.2.1	przedpokój	5,68 m ²
A1.2.2.2	łazienka	4,38 m ²
A1.2.2.3	salon+aneks kuchenny	26,13 m ²
A1.2.2.4	sypialnia	14,56 m ²
SUMA		50,75 m²
A1.3.2.1	poddasze	22,13 m ²
SUMA Z PODDASZEM		72,88 m²

BALKON 4,50 m²