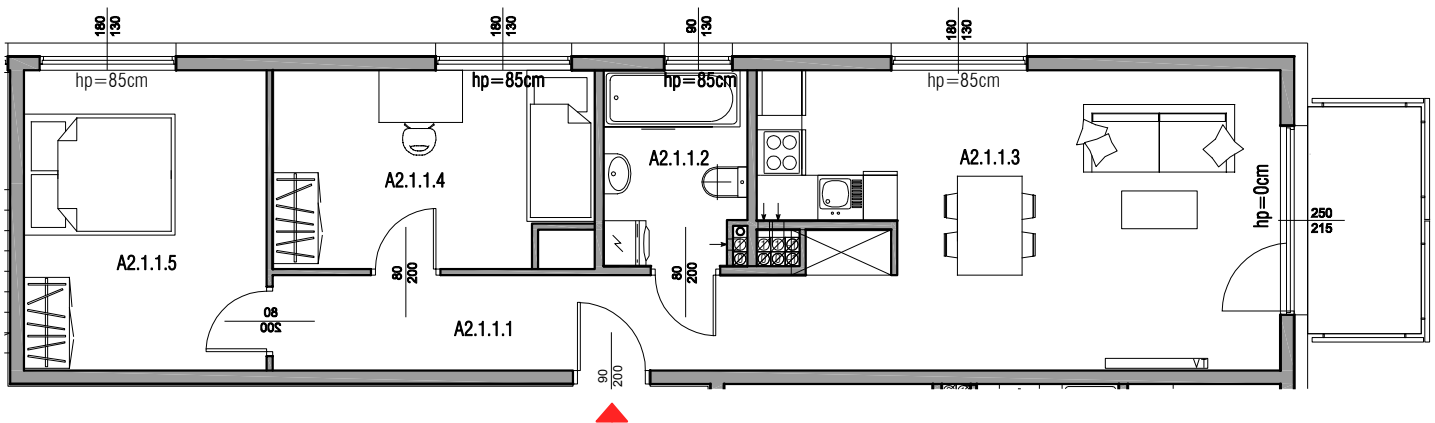
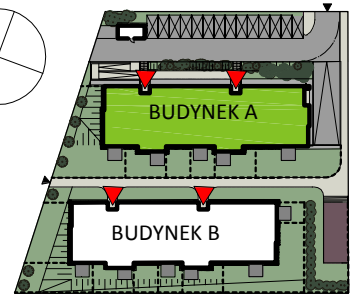
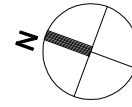
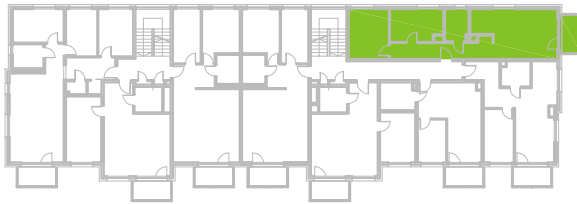


BUDYNEK A

I PIĘTRO

MIESZKANIE A2.1.1



A2.1.1.1	przedpokój	10,81 m ²
A2.1.1.2	łazienka	4,62 m ²
A2.1.1.3	salon+aneks kuchenny	23,50 m ²
A2.1.1.4	sypialnia	10,37 m ²
A2.1.1.5	sypialnia	12,53 m ²
SUMA		61,83 m²

BALKON		4,50m²
---------------	--	--------------------------

