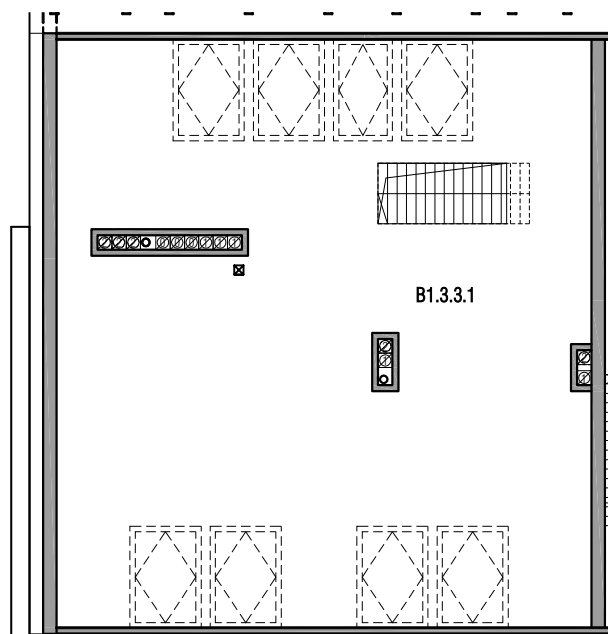
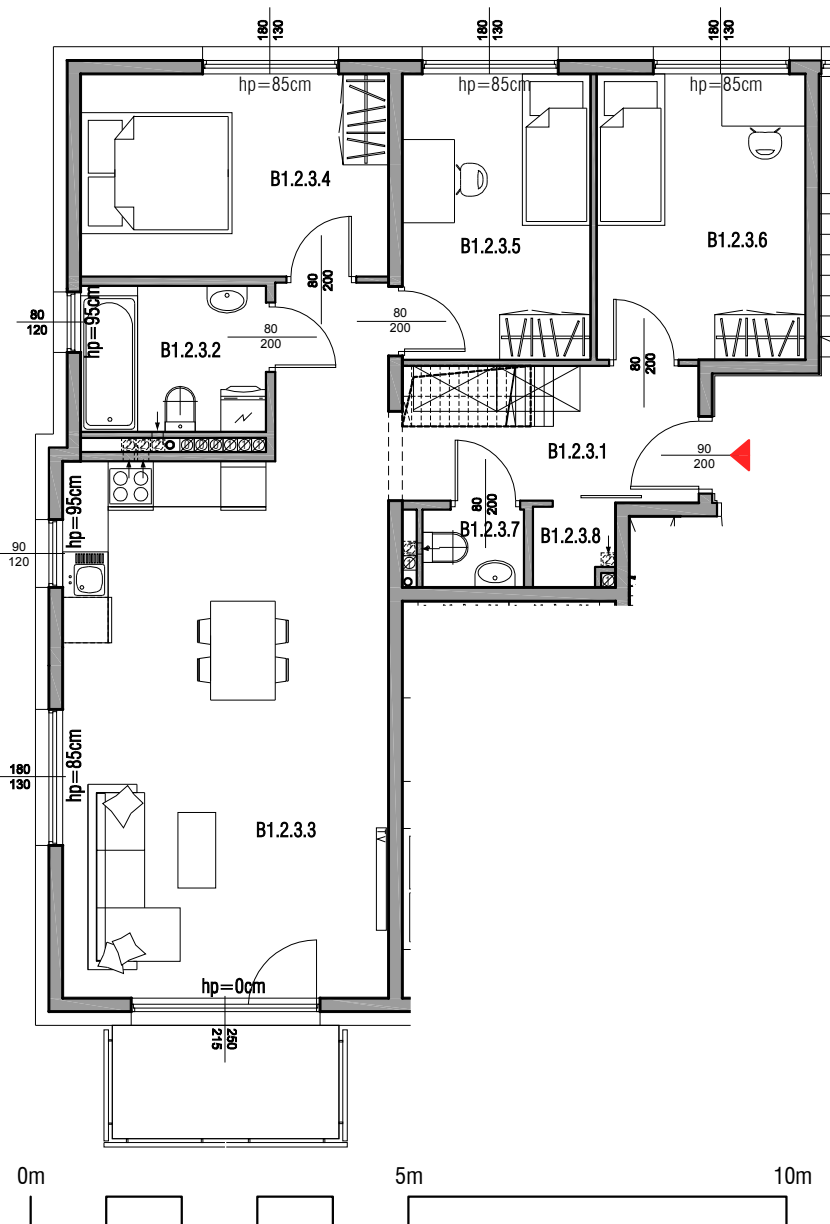
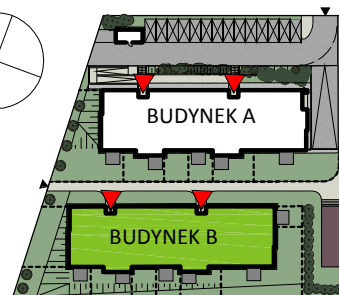
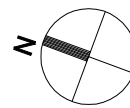
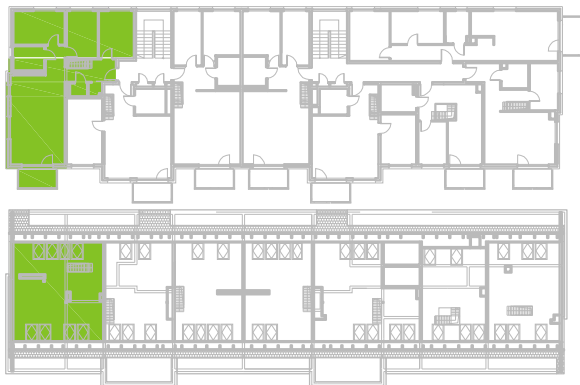


BUDYNEK B
II PIĘTRO
MIESZKANIE B1.2.3


| | | |
|-------------------------|----------------------|-----------------------------|
| B1.2.3.1 | przedpokój | 11,71 m ² |
| B1.2.3.2 | łazienka | 4,60 m ² |
| B1.2.3.3 | salon+aneks kuchenny | 29,06 m ² |
| B1.2.3.4 | sypialnia | 10,71 m ² |
| B1.2.3.5 | sypialnia | 9,22m ² |
| B1.2.3.6 | sypialnia | 10,23m ² |
| B1.2.3.7 | w.c. | 1,31 m ² |
| B1.2.3.8 | garderoba | 1,03 m ² |
| SUMA | | 77,87 m² |
| B1.3.3.1 | poddasze | 31,09 m ² |
| SUMA Z PODDASZEM | | 108,96 m² |

BALKON 4,50 m²