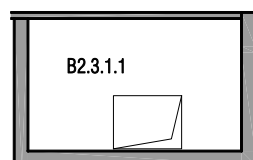
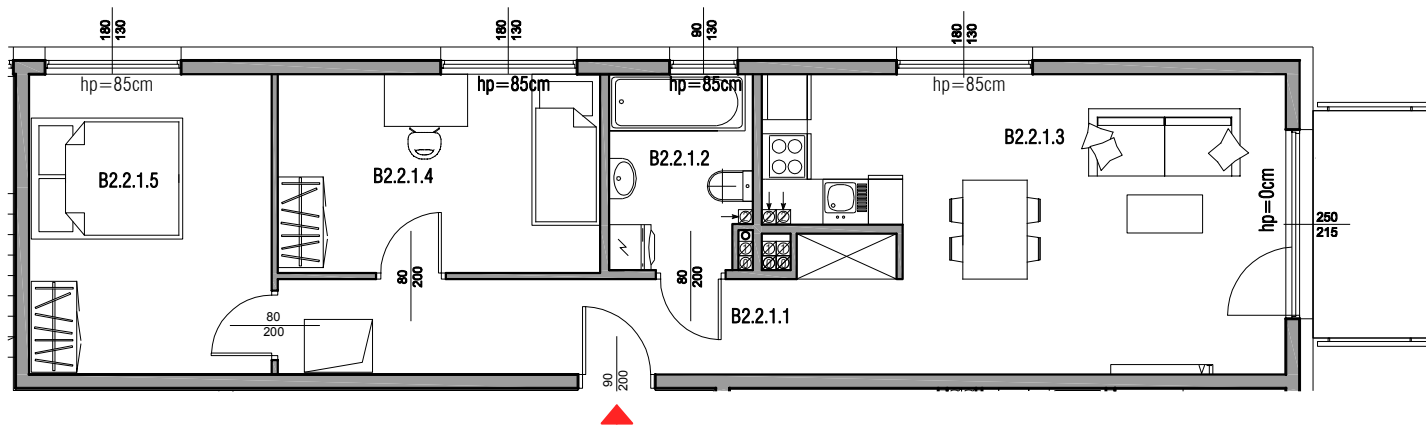
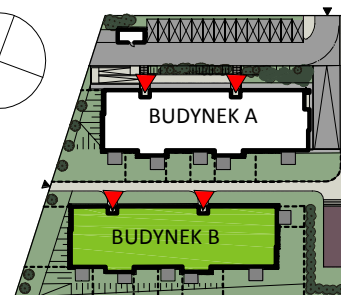
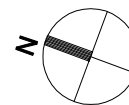
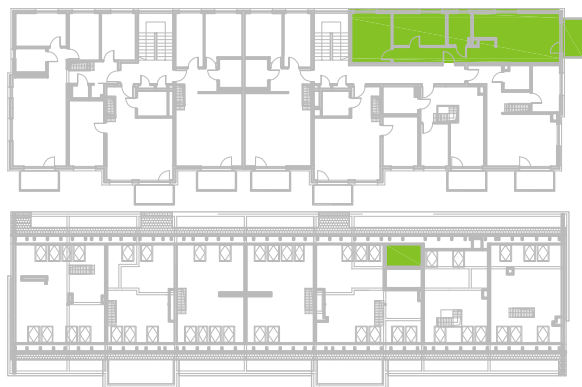


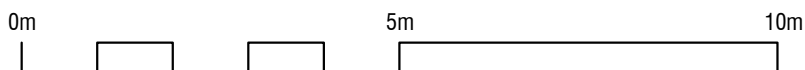
BUDYNEK B

II PIĘTRO

MIESZKANIE B2.2.1



B2.2.1.1	przedpokój	10,93 m ²
B2.2.1.2	łazienka	4,62 m ²
B2.2.1.3	salon+aneks kuchenny	23,50 m ²
B2.2.1.4	sypialnia	11,00 m ²
B2.2.1.5	sypialnia	12,53 m ²
SUMA		62,58 m²
B2.3.1.1	poddasze	0,52 m ²
SUMA Z PODDASZEM		63,10 m²



BALKON 4,50 m²