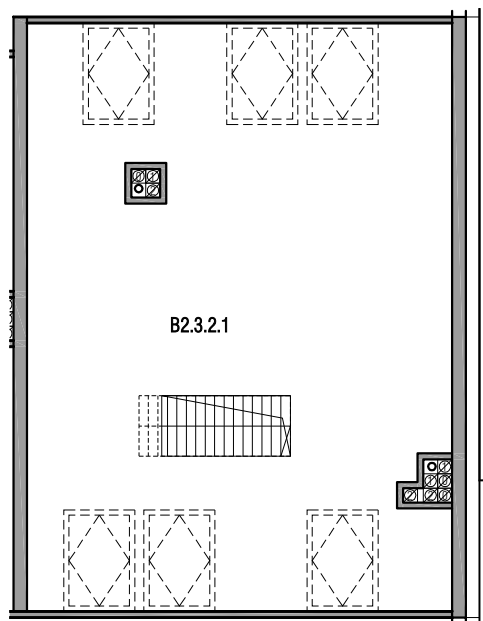
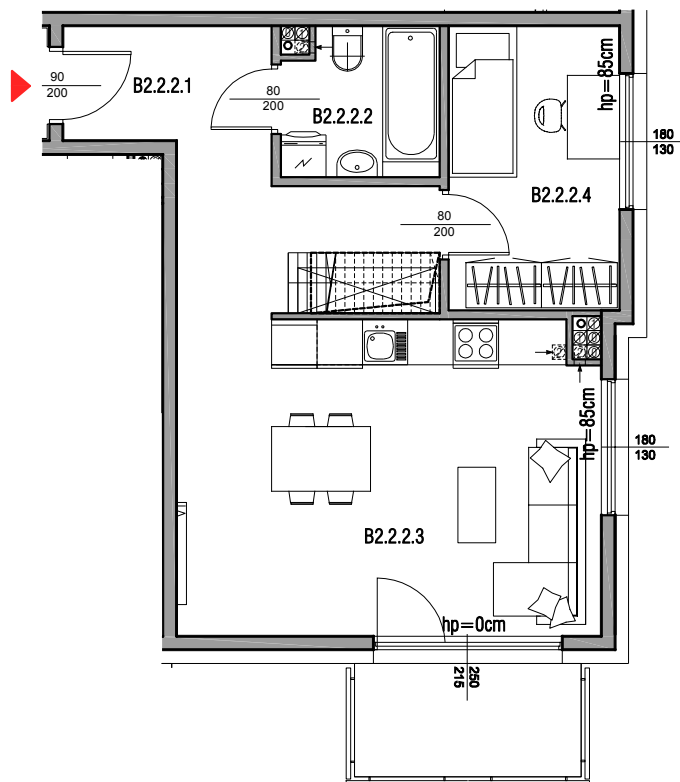
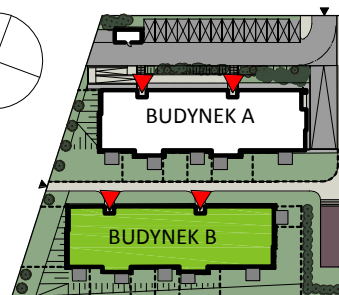
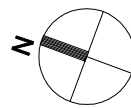
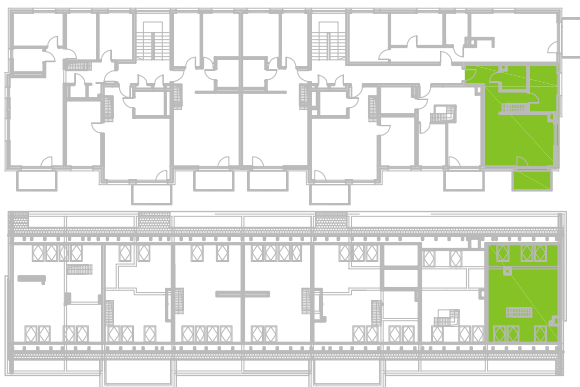


BUDYNEK B

II PIĘTRO

MIESZKANIE B2.2.2



B2.2.2.1	przedpokój	10,53 m ²
B2.2.2.2	łazienka	3,87 m ²
B2.2.2.3	salon+aneks kuchenny	23,07 m ²
B2.2.2.4	sypialnia	8,32 m ²
SUMA		45,79 m²
B2.3.2.1	poddasze	24,93 m ²
SUMA Z PODDASZEM		70,72 m²

BALKON 4,50 m²

