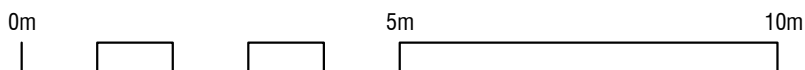
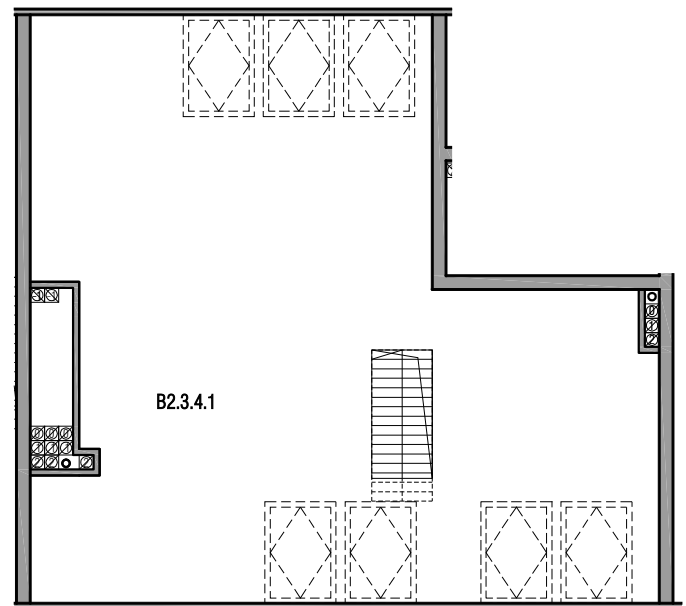
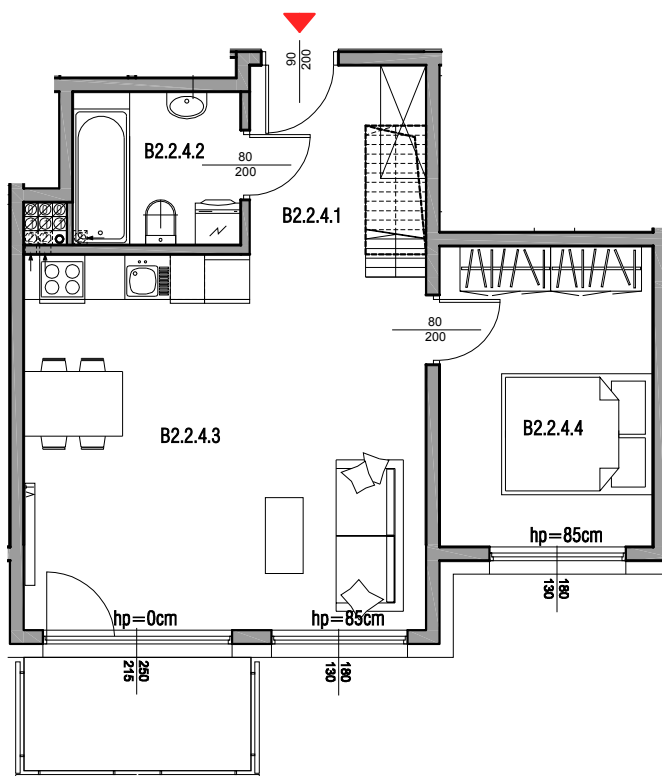
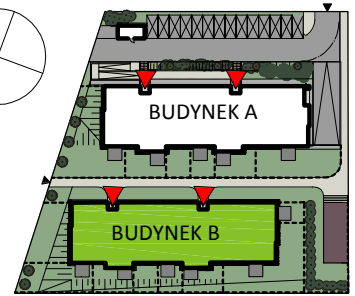
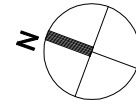


BUDYNEK B

II PIĘTRO

MIESZKANIE B2.2.4



B2.2.4.1	przedpokój	5,68 m ²
B2.2.4.2	łazienka	4,38 m ²
B2.2.4.3	salon+aneks kuchenny	26,13 m ²
B2.2.4.4	sypialnia	11,02 m ²
SUMA		47,21 m²
B2.3.4.1	poddasze	29,92 m ²
SUMA Z PODDASZEM		77,13 m²

BALKON		4,50 m²
---------------	--	---------------------------